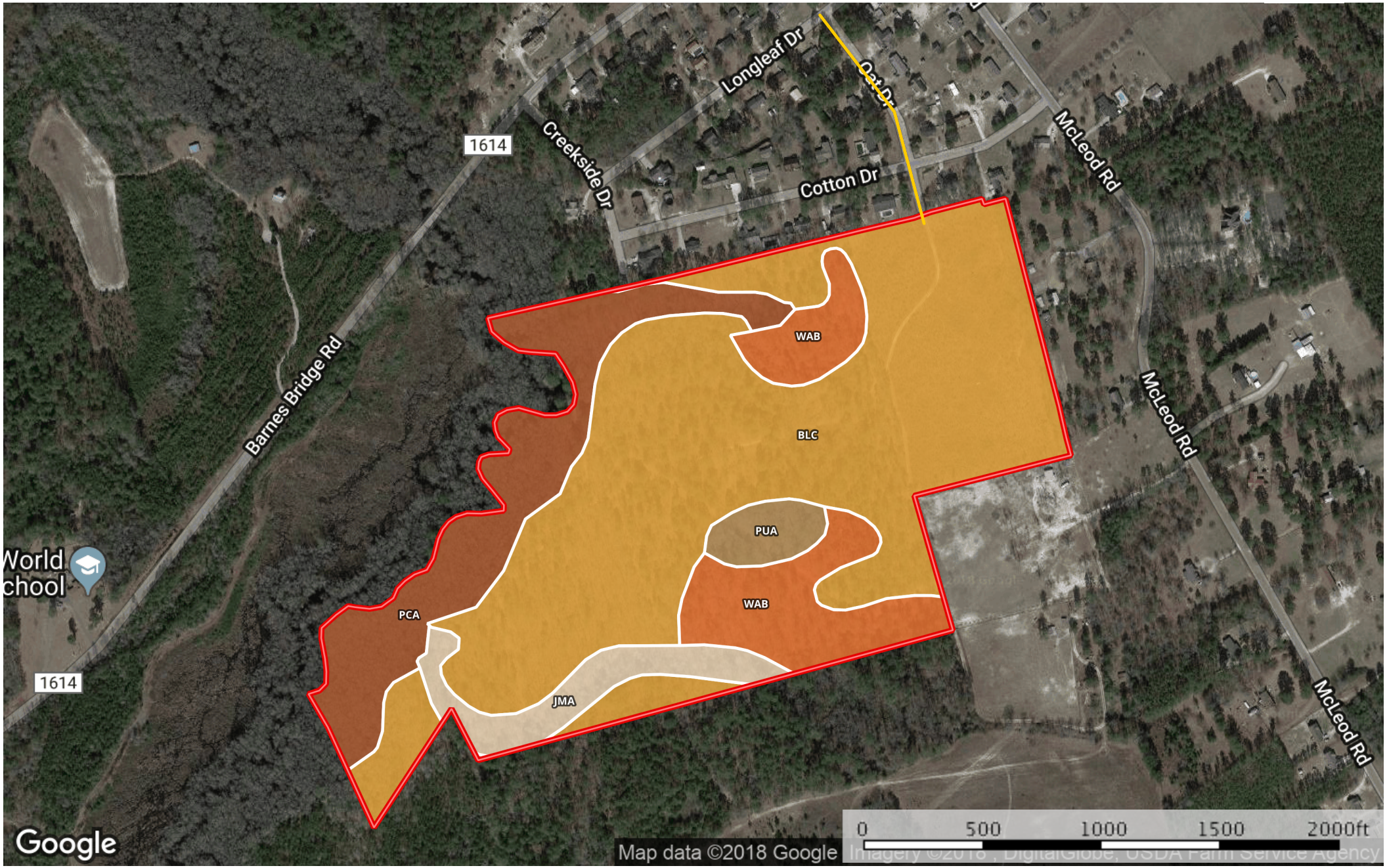


67.61 ac Morris Scotland BC
Scotland County, North Carolina, 67.61 AC +/-



Primary Road Boundary

Boundary 67.9 ac

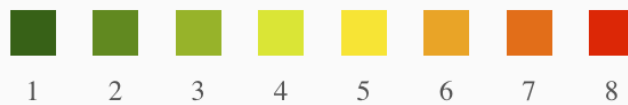
SOIL CODE	SOIL DESCRIPTION	ACRES	%	CAP
PuA	Plummer and Osier soils, 0 to 2 percent slopes	1.7	2.52	4w
WaB	Wagram loamy sand, 0 to 6 percent slopes	8.5	12.55	7w
JmA	Johnston soils, 0 to 2 percent slopes, frequently flooded	3.8	5.61	7w
BIC	Blanton sand, 8 to 15 percent slopes	42.7	62.94	6s
PcA	Pamlico and Johnston soils, 0 to 1 percent slopes, frequently flooded	11.1	16.37	7w
TOTALS		67.9	100%	6.29

Capability Legend

Increased Limitations and Hazards

Decreased Adaptability and Freedom of Choice Users

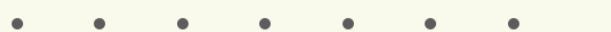
Land, Capability Class(non-irrigated)



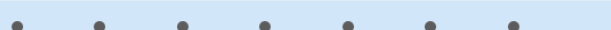
'Wild Life'



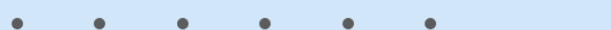
Forestry



Limited



Moderate



Intense



Limited



Moderate



Intense



Very Intense



Grazing Cultivation

(c) climatic limitations (e) susceptibility to erosion

(s) soil limitations within the rooting zone (w) excess of water