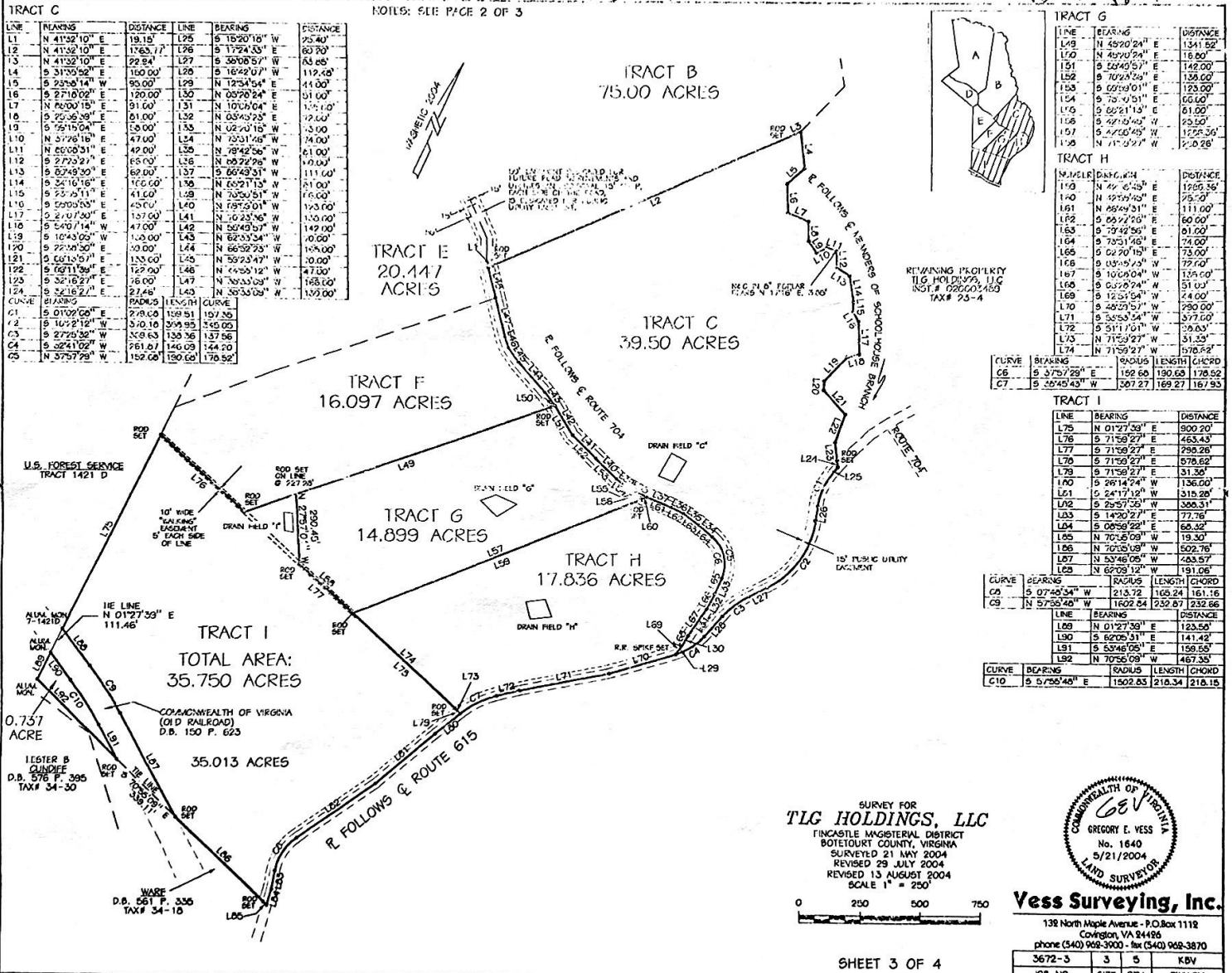


ROLLS: SEE PAGE 2 OF 3



TRACT C

LINE	BEARING	DISTANCE	LINE	BEARING	DISTANCE
L1	N 41°32'10" E	19.15	L25	S 78°20'18" W	25.40
L2	N 41°32'10" E	1163.7	L26	S 77°24'33" E	83.70
L3	N 41°32'10" E	22.84	L27	S 35°00'57" W	63.85
L4	S 31°30'52" E	160.00	L28	S 16°22'07" W	112.48
L5	S 23°30'14" W	90.00	L29	N 12°34'54" E	44.00
L6	S 27°18'02" E	120.00	L30	N 05°20'24" E	51.00
L7	N 76°00'15" E	91.00	L31	N 10°16'04" E	174.10
L8	S 75°30'39" E	81.00	L32	N 03°43'23" E	12.00
L9	S 75°15'04" E	138.00	L33	N 02°20'15" W	33.00
L10	N 57°28'18" E	47.00	L34	N 75°11'46" W	24.00
L11	N 68°00'31" E	42.00	L35	N 78°42'56" W	61.00
L12	S 27°22'27" E	65.00	L36	N 05°22'26" W	10.00
L13	S 62°49'50" E	62.00	L37	S 66°43'31" W	111.60
L14	S 24°16'18" E	175.00	L38	N 65°27'13" W	51.00
L15	S 73°35'11" E	41.00	L39	N 73°20'51" W	76.00
L16	S 59°30'30" E	43.00	L40	N 69°20'01" W	123.00
L17	S 22°07'30" E	157.00	L41	N 10°23'46" W	130.00
L18	S 54°07'14" W	47.00	L42	N 59°49'57" W	142.00
L19	S 16°43'00" W	133.00	L43	N 62°33'54" W	0.00
L20	S 22°30'50" E	30.00	L44	N 66°32'23" W	168.00
L21	S 66°15'51" E	133.00	L45	N 59°23'47" W	30.00
L22	S 60°11'39" E	122.00	L46	N 44°50'12" W	47.00
L23	S 32°16'27" E	78.00	L47	N 39°33'03" W	168.00
L24	S 24°16'27" E	23.48	L48	N 35°33'03" W	192.00
CURVE	BEARING	RADIUS	LENGTH	CHORD	
C1	S 01°02'00" E	278.00	139.51	157.25	
C2	S 16°28'12" W	370.10	339.95	345.03	
C3	S 27°25'32" W	239.63	139.16	137.96	
C4	S 32°41'02" W	761.07	146.09	144.70	
C5	N 37°57'29" W	152.68	150.68	176.92	

TRACT G

LINE	BEARING	DISTANCE
L49	N 45°20'24" E	1341.52
L50	N 45°20'24" E	16.80
L51	S 68°49'57" E	142.00
L52	S 70°18'04" E	136.00
L53	S 65°30'01" E	123.00
L54	S 75°40'51" E	66.00
L55	S 60°21'15" E	61.00
L56	S 47°10'40" W	23.50
L57	S 47°26'43" W	1725.36
L58	N 71°32'27" W	20.28

TRACT H

LINE	BEARING	DISTANCE
L59	N 44°45'35" E	1295.36
L60	N 45°20'24" E	75.00
L61	N 65°04'31" E	111.00
L62	S 65°22'20" E	60.00
L63	S 73°42'56" E	61.00
L64	S 70°31'46" E	74.00
L65	S 62°20'15" E	73.00
L66	S 43°49'24" E	27.00
L67	S 10°00'04" W	125.00
L68	S 03°28'24" N	51.00
L69	S 12°31'54" N	24.00
L70	S 02°20'15" W	790.00
L71	S 53°33'54" W	377.00
L72	S 51°11'01" W	23.63
L73	N 71°59'27" W	31.23
L74	N 71°59'27" W	1578.22

TRACT I

LINE	BEARING	DISTANCE
L75	N 01°27'39" E	900.20
L76	S 71°59'27" E	453.43
L77	S 71°59'27" E	239.28
L78	S 71°59'27" E	578.62
L79	S 71°59'27" E	31.30
L80	S 24°17'12" W	315.20
L81	S 25°57'53" W	388.31
L82	S 14°20'37" E	77.76
L83	S 08°38'58" E	68.32
L84	N 70°15'09" W	19.30
L85	N 70°15'09" W	502.76
L86	N 53°46'06" W	433.57
L87	N 62°39'12" W	151.05

TRACT I (continued)

CURVE	BEARING	RADIUS	LENGTH	CHORD
C6	S 37°57'29" E	152.66	130.68	178.52
C7	S 35°45'43" W	367.27	169.27	167.93

TRACT I (continued)

LINE	BEARING	DISTANCE
L88	N 01°27'39" E	123.56
L89	S 60°25'11" E	141.42
L90	S 53°46'06" E	159.53
L91	N 70°56'09" W	467.35

TRACT I (continued)

CURVE	BEARING	RADIUS	LENGTH	CHORD
C8	S 07°40'34" W	213.72	165.24	161.16
C9	N 57°30'40" W	1602.54	232.87	232.66

TRACT I (continued)

LINE	BEARING	DISTANCE
L92	N 01°27'39" E	123.56
L93	S 60°25'11" E	141.42
L94	S 53°46'06" E	159.53
L95	N 70°56'09" W	467.35

TRACT I (continued)

CURVE	BEARING	RADIUS	LENGTH	CHORD
C10	S 57°56'48" E	1502.83	216.34	216.15

TLG HOLDINGS, LLC
 TINCANVILLE MAGISTERIAL DISTRICT
 BOTETOURT COUNTY, VIRGINIA
 SURVEYED 21 MAY 2004
 REVISED 29 JULY 2004
 REVISED 13 AUGUST 2004
 SCALE 1" = 250'



Vess Surveying, Inc.
 132 North Maple Avenue - P.O. Box 1118
 Covington, VA 24436
 phone (540) 968-3000 - fax (540) 968-3870

