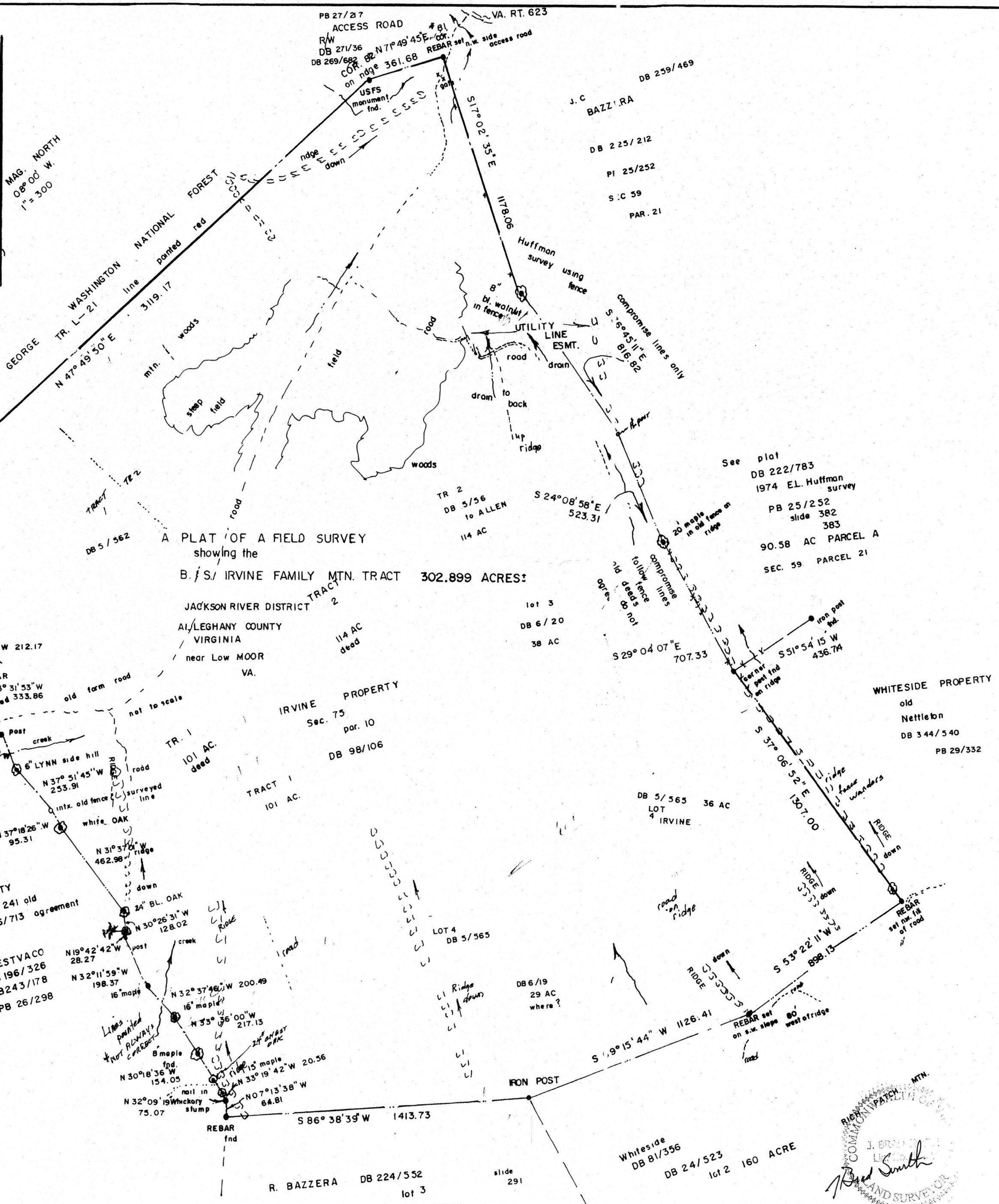


MAG. NORTH
08° 00' W.
1" = 300'



A PLAT OF A FIELD SURVEY
showing the
B.S./ IRVINE FAMILY MTN. TRACT 302.899 ACRES:
JACKSON RIVER DISTRICT
ALLEGHANY COUNTY
VIRGINIA
near Low MOOR
VA.

NOTES:
THIS LAND IS SUBJECT TO ALL
EASEMENT, UTILITIES DO EXIST.

MOUNTAINEER LAND SURVEYS
J. BRAD SMITH, Land Surveyor, L.S.
RT. 1 BOX 306
SINKS GROVE, W.V. 2 4976
1" = 300' MAY - NOV. 2010
304-667-5897
304-772-3554 office

RIGHT OF COMMON PATCH MTN.
J. BRAD SMITH
LAND SURVEYOR

Whiteside DB 81/356
DB 24/523 lot 2 160 ACRE

R. BAZZERA DB 224/552
lot 3
DB 24/523

See plot
DB 222/783
1974 EL. Huffman
survey
PB 25/252
slide 382
383
90.58 AC PARCEL A
SEC. 59 PARCEL 21

WHITESIDE PROPERTY
old
Nettlebn
DB 344/540
PB 29/332

DB 5/565 36 AC
LOT 4 IRVINE

DB 6/19
29 AC
where?

lot 3
DB 6/20
38 AC

DB 98/106

114 AC
dead

DB 5/562

INSTR. 030001506
PB 26/298
HARNER PROPERTY
DB 260/241 old
PB 26/713 agreement

WESTVACO
DB 196/326
DB 243/178
PB 26/298

USFS TRACT L-21
COR. 85
N 48° 29' 16" E 167.83 REBAR
N 13° 36' 21" W 39.54
N 20° 41' 46" W 40.77
N 65° 46' 53" W 104.33
N 34° 49' 51" W 179.31
N 34° 49' 51" W 179.31
N 40° 44' 27" W 209.46
N 41° 07' 24" W 212.17

POPLAR
N 35° 31' 53" W 333.86
Gate closed
N 27° 34' 22" W 178.59
N 37° 51' 45" W 253.91
N 37° 18' 26" W 95.31
N 31° 37' 01" W 462.98

N 19° 42' 42" W 28.27
N 32° 11' 59" W 198.37
N 32° 37' 46" W 200.49
N 35° 36' 00" W 217.15
N 30° 18' 36" W 134.05
N 32° 09' 19" W 75.07
N 32° 09' 19" W 75.07
N 07° 13' 38" W 64.81
N 35° 19' 42" W 20.56

TR 2
DB 5/56
to ALLEN
114 AC

S 24° 08' 58" E 523.31

S 29° 04' 07" E 707.33

S 37° 06' 52" E 1307.00

S 19° 15' 44" W 1126.41

S 53° 22' 11" W 898.13

S 51° 54' 15" W 436.74

S 17° 02' 35" E 1178.06

S 17° 02' 35" E 1178.06

S 17° 02' 35" E 1178.06