

LINE CHART

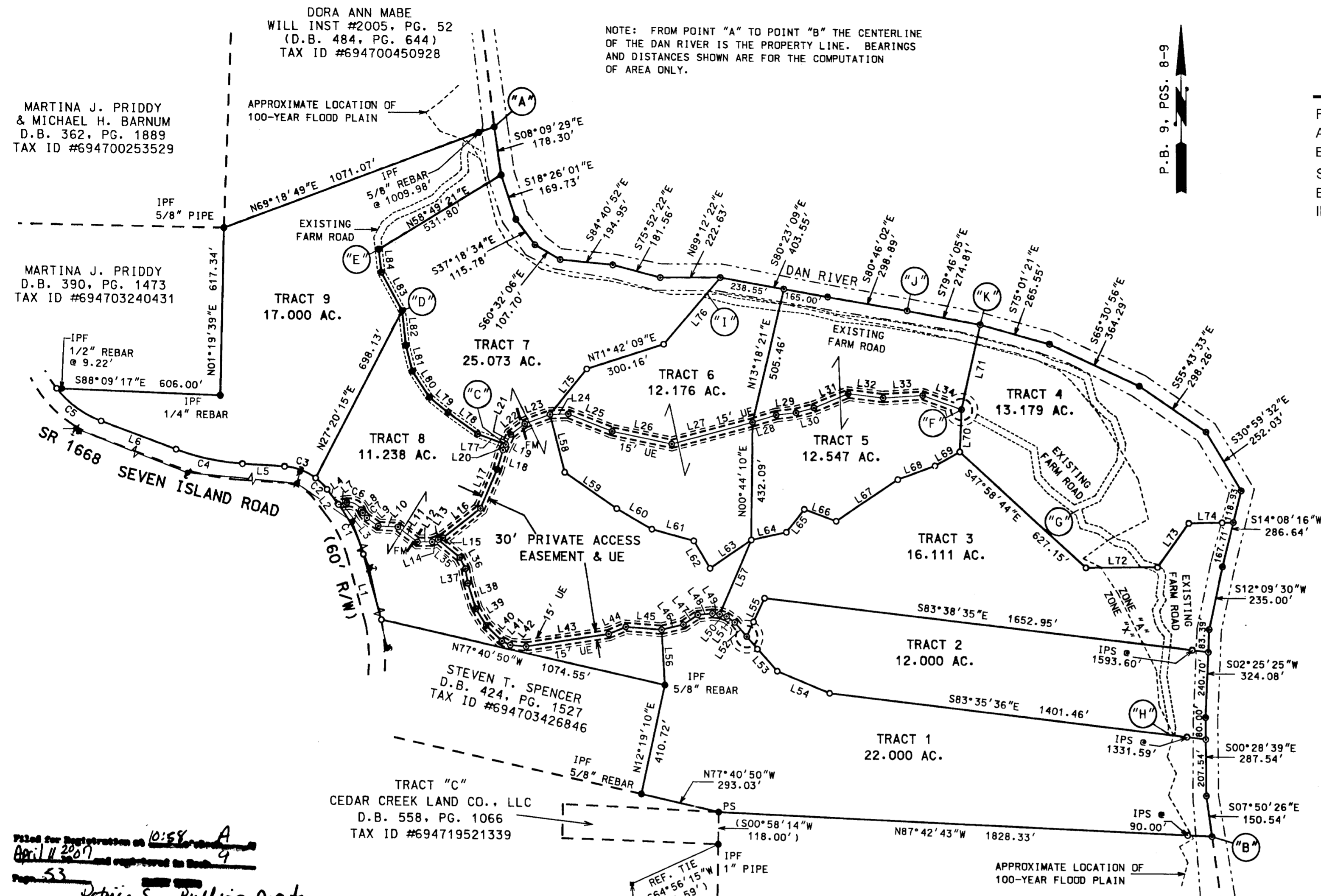
LINE	BEARING	DISTANCE
L1	N15°36'02"W	247.74'
L2	S37°42'43"E	69.70'
L3	N37°42'46"W	3.29'
L4	N37°42'43"W	66.41'
L5	N86°55'39"W	155.67'
L6	N69°53'04"W	295.24'
L7	N80°36'02"E	33.12'
L8	S27°15'19"E	12.10'
L9	S54°59'46"E	51.13'
L10	S87°26'58"E	72.74'
L11	S53°19'41"E	90.96'
L12	N88°43'15"E	54.08'
L13	N69°29'27"E	42.77'
L14	N69°29'27"E	23.57'
L15	N69°29'27"E	19.20'
L16	N51°59'20"E	176.85'
L17	N23°23'08"E	155.83'
L18	N17°05'37"E	74.92'
L19	N26°29'28"E	64.76'
L20	N26°29'28"E	23.21'
L21	N26°29'28"E	41.55'
L22	N52°04'50"E	65.74'
L23	N69°12'31"E	99.99'
L24	N87°59'00"E	68.19'
L25	S68°36'50"E	174.32'
L26	S78°44'30"E	224.41'
L27	N74°19'57"E	311.63'
L28	N72°13'22"E	92.43'
L29	N82°56'44"E	72.84'
L30	N74°24'12"E	69.34'
L31	N67°15'38"E	138.85'
L32	S83°29'28"E	130.50'
L33	N85°45'06"E	146.88'
L34	S70°39'16"E	152.16'
L35	S50°59'01"E	102.94'
L36	S27°32'41"E	45.24'
L37	S09°07'45"E	54.17'
L38	S17°48'26"E	97.12'
L39	S32°08'38"E	71.79'
L40	S45°40'02"E	80.97'
L41	S65°12'38"E	34.69'
L42	S85°14'37"E	58.48'
L43	N80°59'17"E	309.77'
L44	N67°16'00"E	69.09'
L45	S86°08'59"E	132.64'
L46	N76°06'06"E	83.36'
L47	N55°42'46"E	64.76'
L48	N83°35'08"E	54.20'
L49	S85°11'47"E	26.88'
L50	S73°22'02"E	27.12'
L51	S54°14'18"E	37.03'
L52	S40°36'41"E	68.10'
L53	S41°57'51"E	168.66'
L54	S67°31'49"E	210.21'
L55	N25°10'44"E	156.21'
L56	S03°21'41"E	203.15'
L57	N23°29'17"E	296.86'
L58	S14°15'40"E	220.23'
L59	S55°40'11"E	233.02'
L60	S60°32'56"E	149.52'
L61	S75°22'26"E	159.48'
L62	S31°14'36"E	116.55'
L63	N55°30'24"E	186.15'
L64	N77°12'08"E	133.01'
L65	N38°16'10"E	107.37'
L66	S70°42'59"E	125.60'
L67	N56°19'36"E	276.16'
L68	N69°20'52"E	146.84'
L69	N60°07'44"E	105.50'
L70	S02°30'59"W	157.63'
L71	N12°33'59"E	320.07'
L72	N89°04'45"E	265.00'
L73	N35°34'28"E	198.91'
L74	N88°22'05"E	165.28'
L75	N38°51'27"E	217.14'
L76	N40°22'35"E	325.00'
L77	N70°11'51"W	110.42'
L78	N54°29'37"W	135.17'
L79	N51°18'16"W	87.91'
L80	N33°09'10"W	115.34'
L81	N14°07'52"W	97.61'
L82	N06°27'29"W	128.80'
L83	N28°43'01"W	159.54'
L84	N06°14'04"W	84.57'

FILED
STOKES COUNTY
KATHY YOUNG
REGISTER OF DEEDS

FILED Apr 11, 2007
AT 10:58 am
BOOK 00009
START PAGE 0053
END PAGE 0053
INSTRUMENT # 02605

NOTE: FROM POINT "A" TO POINT "B" THE CENTERLINE OF THE DAN RIVER IS THE PROPERTY LINE. BEARINGS AND DISTANCES SHOWN ARE FOR THE COMPUTATION OF AREA ONLY.

P.B. 9, PGS. 8-9



MARTINA J. PRIDY & MICHAEL H. BARNUM
D.B. 362, PG. 1889
TAX ID #694700253529

MARTINA J. PRIDY
D.B. 390, PG. 1473
TAX ID #694703240431

DORA ANN MABE
WILL INST #2005, PG. 52
(D.B. 484, PG. 644)
TAX ID #694700450928

STEVEN T. SPENCER
D.B. 424, PG. 1527
TAX ID #694703426846

TRACT "C"
CEDAR CREEK LAND CO., LLC
D.B. 558, PG. 1066
TAX ID #694719521339

FRANKLIN D. LAWSON
D.B. 291, PG. 169
TAX ID #694719512921

MRS. BEN SMITH HEIRS
D.B. 91, PG. 348
TAX ID #694719614916

NCGS MON FOUND
"SCOTT"
X COORD. 1,645,070.631'
Y COORD. 972,186.505' > NAD 27
Control Corner

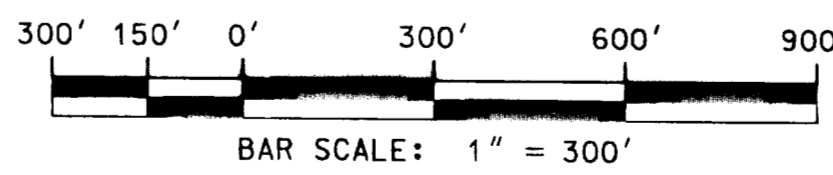
Filed for Registration on 10:58 AM
April 11, 2007
Patricia S. Bell is Deputy
Register of Deeds, Stokes Co., N.C.

State of North Carolina
County of Stokes
Amy J. Carter
Date: 4-11-07

CURVE DATA CHART

CURVE	DELTA	RADIUS	LENGTH	CHORD	CHD BEARING
C1	022°06'41"	527.77'	203.68'	202.41'	N26°39'22"W
C2	015°52'59"	213.10'	59.07'	58.88'	N45°39'12"W
C3	033°19'57"	213.10'	123.97'	122.23'	N70°15'40"W
C4	017°02'35"	844.16'	251.10'	250.18'	N78°24'21"W
C5	031°12'57"	377.15'	205.48'	202.95'	N54°16'35"W
C6	072°08'39"	50.00'	62.96'	58.88'	S63°19'38"E
C7	027°44'27"	50.00'	24.21'	23.97'	S41°07'33"E

- LEGEND
- CORNER NEITHER SET NOR FOUND
 - IRON PIN SET (1/2" REBAR)
 - CORNER FOUND AS SHOWN
 - IPF IRON PIN FOUND
 - PS PLANTED STONE FOUND
 - R/W RIGHT-OF-WAY
 - TP TELEPHONE PEDESTAL
 - UTILITY POLE
 - OVERHEAD UTILITIES
 - GUY WIRE
 - UE UTILITY EASEMENT
 - FM APPROXIMATE LOCATION OF SANITARY SEWER FORCE MAIN CONDUCT



BERKLEY-HOWELL & ASSOC., P.C. ENGINEERS - SURVEYORS - PLANNERS 306 ENTERPRISE DRIVE, SUITE C FOREST, VIRGINIA 24551 PHONE: (434)385-7548 FAX: (434)385-6178		PLAT OF SURVEY OF CAVES ON THE DAN - SECTION II FOR CEDAR CREEK LAND CO., LLC DANBURY TOWNSHIP - STOKES COUNTY, NC	
SCALE: 1" = 300'	DATE: OCTOBER 30, 2006	COMM. NO. 060294	F.B. REF.
			SHEET 2 OF 2