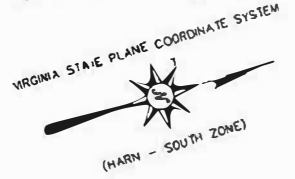


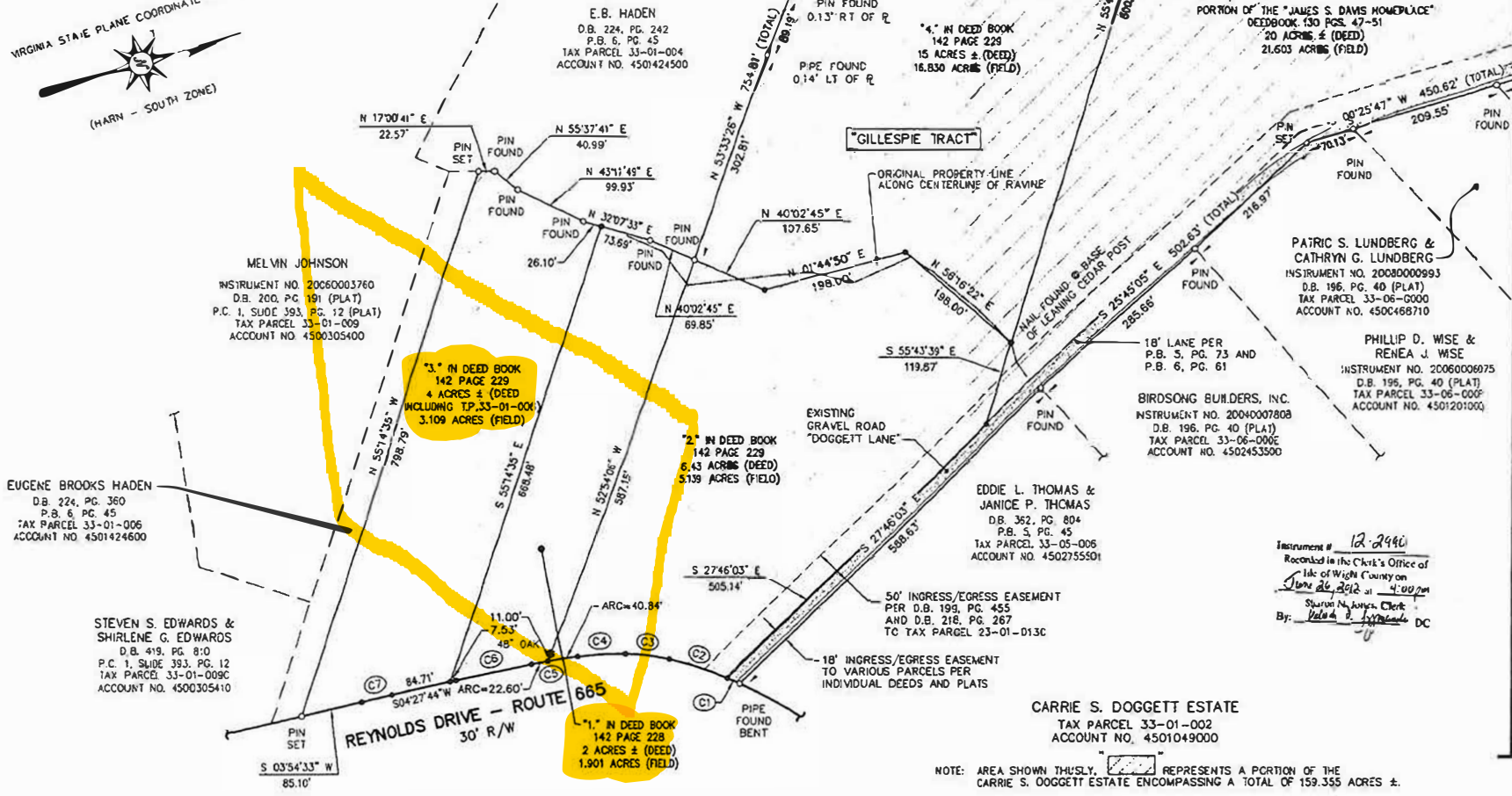
2012-44-2

2012-44-2



MATCHLINE - SHEET 3

MATCHLINE - SHEET 5



2012-44-2

CURVE TABLE						
CURVE	LENGTH	RADIUS	TANGENT	DELTA	CHORD	BEARING
C1	19.38'	629.60'	9.69'	01°42'41"	19.38'	S 40°32'21" W
C2	88.25'	504.19'	44.23'	10°05'33"	88.13'	S 34°38'15" W
C3	64.58'	312.18'	32.40'	11°51'09"	64.46'	S 23°39'53" W
C4	66.61'	444.84'	33.37'	08°34'48"	66.55'	S 13°28'55" W
C5	63.44'	942.17'	31.73'	03°51'27"	63.42'	S 07°13'47" W
C6	106.60'	7,280.56'	53.30'	00°50'20"	106.59'	S 04°32'54" W
C7	44.73'	4,633.67'	22.36'	00°33'11"	44.73'	S 04°11'08" W

NOTE: AREA SHOWN THUSLY REPRESENTS A PORTION OF THE CARRIE S. DOGGETT ESTATE ENCOMPASSING A TOTAL OF 159.355 ACRES ±.

NOTE: AREA SHOWN THUSLY REPRESENTS A PORTION OF THE CARRIE S. DOGGETT ESTATE ENCOMPASSING A TOTAL OF 97.834 ACRES ±.

Instrument # 12,2940  
 Recorded in the Clerk's Office of  
 the City of Wigan County on  
 June 21, 2012 at 4:00 PM  
 By: *[Signature]* Clerk



SCALE: 1"=100' JUNE 17, 2011  
 COURTNEY & ASSOCIATES, P.C.  
 SURVEYORS - MAPPING CONSULTANTS  
 RIGHT OF WAY ACQUISITION AGENTS - PLANNERS  
 SUFFOLK, VIRGINIA  
 (757) 539-0036 23434

SHEET TWO OF ELEVEN